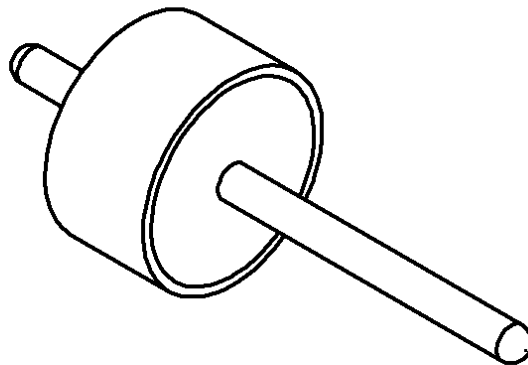
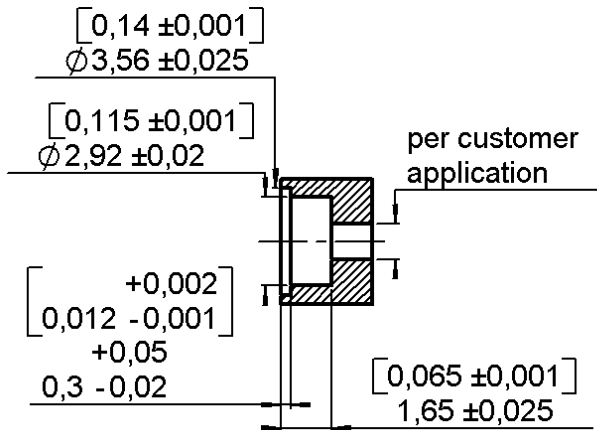
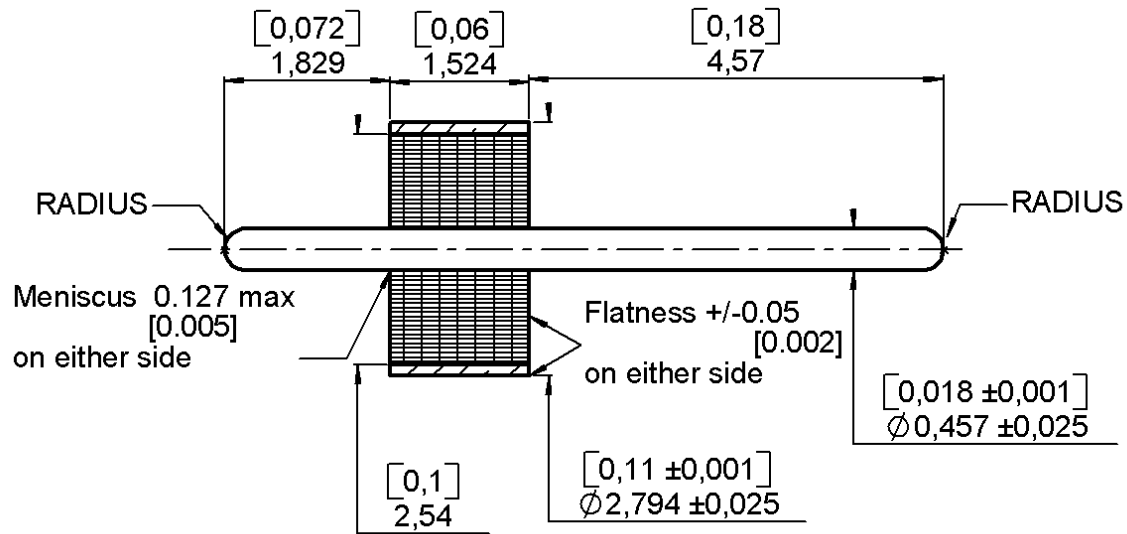


**GLASS BEAD  
PACKAGING 100**

**R280.755.050**

Series : ACC-COAX



SCALE: 1/1

All dimensions are in mm.



COMPONENTS	MATERIALS	PLATING (µm)
BODY	FERRO-NICKEL	GOLD .
CENTER CONTACT	FERRO-NICKEL	GOLD .
OUTER CONTACT	-	-
INSULATOR	MATCHED GLASS	-
GASKET		
OTHERS PARTS		

Operating temperature : -65/+200 °C

Weight : 0.150 g

Others characteristics : Impedance: 50Ohm

Leak rate <math>1.10^{-8}</math> atm\*cm<sup>3</sup>/s

Issue : 0539 A

In the effort to improve our products, we reserve the right to make changes judged to be necessary.

